



## **BATCHPUR** SBR small wastewater treatment plant

**The future-proof treatment system for  
your home**

- Low energy and operating costs
- Future-proof control- / cleaning- technology
- Immediately expandable to higher cleaning classes
- Developed, tested and manufactured in Germany

CLEAN, SUSTAINABLE AND  
ECONOMICAL  
CLEANING!





## Clear arguments for the clean solution:

**You get durable, advanced technology** because no rotating or electrical elements are installed in the tank for the C–D classes\*\*. Instead of electric pumps, high-quality air lifts are used.

**You get economical technology** due to low energy consumption. Batchpur has proven the low energy consumption of 90 watts per inhabitant/day in the 38-week test at the test field in Aachen.

**You get maintenance-friendly technology** because all conveying equipment is designed to be wear-free and easily accessible when installed.

**You get future-proof technology** because the proofs for higher cleaning classes are already available today.

**You receive a well-thought-out technology:** The batchpur stepper motors open and close barely audible. Gentle technology that also protects the material. The stepper motors with the airstep system are made of high-quality material and can be easily replaced if necessary.

## THE TECHNICAL OPTIMUM!

### The advantages

- Classes C, N, D included\*\*
- Extendable cleaning class P\* \*\*
- Extendable cleaning class H\* \*\*
- Extendable cleaning stage for the elimination of micropollutants\*
- Online remote monitoring\*
- One-time maintenance\*
- Durable, high-quality plastic and stainless steel parts processed
- Very easy and clean retrofitting
- No electric pump

\*At a surcharge, \*\* Purification classes according to german regulations

## Modules of the batchpur SBR plant

**Carbon decomposition/nitrification-denitrification** (Already included at no extra charge).

**Phosphate elimination**

**UV disinfection**

**Elimination of micropollutants**

## Certifications of the batchpur SBR plant

**38-week test** according to EN 12566-3:2013

**12-week vacation home test**

**UV module test** according to EN 12566-7:2013 P

**module test** according to EN 12566-7:2013 C4C

**module test** according to EN 12566-7:2013





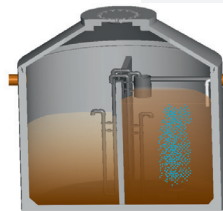
THE OPTIMIZED

## CLEANING PROCESS



### Filling

The stored wastewater from the primary purifier is pumped into the SBR reactor.



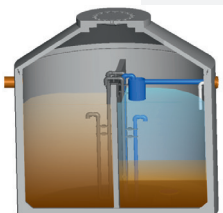
### Aeration

The wastewater is aerated and circulated by a compressor. Biological wastewater treatment takes place during this process. The control system determines the aeration time automatically and continuously so that only the necessary energy is used. Due to the resulting currents, an optimal mixing with a high cleaning performance takes place.



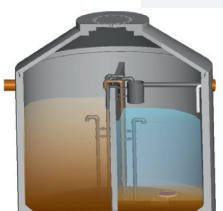
### Settling

After the biological cleaning by bacteria is completed, the so-called settling phase takes place. In this settling phase, the cleaned wastewater separates from the biological sludge. A clear water zone is created in the upper area. This is where the treated wastewater is now located.



### Clear water removal

From the clear water zone, the treated wastewater is removed by means of a compressed air jack for discharge into a body of water or infiltration.



### Excess sludge removal

The excess biomass produced during the cleaning process is conveyed by means of a compressed air lift to the mechanical primary purifier. The purification process can start again.

## THE CLEAR EDGE IN **TECHNOLOGY**

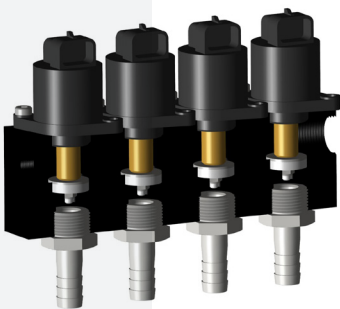


### **State-of-the-art control with measurable benefits**

The batchpur small wastewater treatment plants are characterized by their newly revised, intelligent easy...con control module.

#### **The advantages of the new control system at a glance:**

- Very low energy consumption in standby mode of only 1 watt
- Large, illuminated graphic display
- Convenient 6-key for easy operation
- Up to 7 stepper motors can be used
- All outputs individually fused via micro fuses
- USB port for user-friendly software updates via USB stick
- Electronic operating log that can be read out via the display or the USB interface as a standard
- WIFI module as a standard. Optionally, a modem can also be easily integrated for complete remote monitoring or only for forwarding faults.
- The easy...con control system includes both the software and the switchable outputs for additional cleaning stages. This makes it easy to upgrade later without replacing the control system.
- Simple connection of additional sensors such as oxygen-, conductivity-, or redox-sensors.



### **Whisper-quiet air distribution system with long-term benefits**

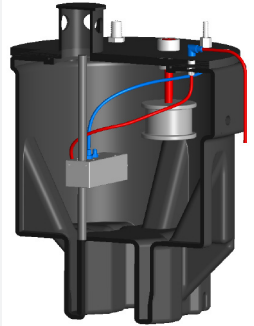
What makes the subtle, but in the operating costs effective difference of batchpur small wastewater treatment plants compared to other plants?

#### **90% less energy consumption in the air distribution system:**

Batchpur plants work with airstep air distribution systems with stepper motors from batchpur instead of solenoid valves. Solenoid valves have the disadvantage that they have to be permanently supplied with energy during the opening process. This would mean for you as a consumer that for example, the solenoid valve has to be supplied with power during the whole opening time. This is usually between 10 - 15 watts. The calculation is quite simple: Meanwhile, batchpur's stepper motor system needs less than 10% energy.

DIE OPTIMAL

# TECHNOLOGY



Hand-made dosing station for the pneumatic dosing of precipitating agents or oxidizing agents.

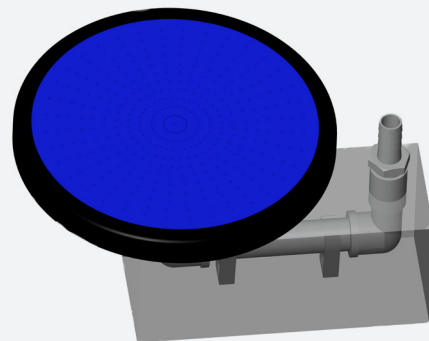
## RESPONSIBLE AND FAR-SIGHTED CHOICE OF MATERIAL AND CONSTRUCTION METHOD

batchpur small wastewater treatment plants are designed and manufactured with prudence and foresight. There are fine technical details, which originate from the commitment to sustainability and performance, such as high-quality, durable material for the individual components, the production according to high industrial standards, such as bonded joints for plastic pipes and sleeves instead of using HT pipes etc. As a consumer, you will also feel this when your system start racking up years. Because then individual components of batchpur can be exchanged and replaced easily and economically.

## MODULES THAT CAN BE EXPANDED TO HIGHER CLEANING CLASSES AT ANY TIME...

For example, if the phosphate content in the effluent of the wastewater treatment plant is to be limited or the treated wastewater is to be sterilized: We have the right solution. We also have the solution for the elimination of non-biodegradable substances, drug residues, antibiotics, etc. The appropriate technology was tested according to EN 12566.

**For a safe future!**



High-quality, removable disc aerator



**BATCHPUR BRINGS DEMONSTRABLY VERY GOOD CLEANING VALUES AT EXTREME UNDERLOAD. I.E. THIS FACILITY IS IDEAL FOR YOUR VACATION HOME!**

**PROVEN BY A 6-MONTH VACATION HOME TEST ON THE TEST FIELD IN AACHEN!**

FULFILL OBLIGATIONS..

## ENJOY FLEXIBILITY.

**ONLINE MONITORING (AT A SURCHARGE)**

### ... ALWAYS IN CONTACT!

Now you can optionally communicate with your batchpur plant via internet using the easy...con control system. You can use easy...con to check whether your small wastewater treatment plant is working, at any time, far away from the plant, on your PC, laptop or smartphone. The easy...con control with WIFI prepares the data for HTML and can be accessed via your internet browser. You do not need any software installation or any operating system.

### ... ALWAYS LESS EFFORT!

With easy...con operator controls can be omitted.

### ... ONLY 1 MAINTENANCE PER YEAR!

In Germany, according to the regulations, small wastewater treatment plants of effluent class C have to be maintained twice per year. However, with the optional easy...con remote monitoring, you only need 1 maintenance per year according to the DIBt-approval for the classes C+N\*\*.

### ... ALWAYS HIGH EFFICIENCY THROUGH VALUABLE DATA!

For the evaluation easy...con provides relevant data about the batchpur plant. The easy...con control system is designed to record everything that happens in the plant very comprehensively and thoroughly. You have precise information about the purification process and the function of the wastewater treatment plant at all times.

### ... OPERATE INDIVIDUALLY – MANAGE CENTRALLY!

Associations can now manage all batchpur plants from one central office. Administration is simplified and costs remain low. So you can take responsibility.

### ... THE SERVICE TECHNICIAN IS INFORMED AND READY TO ACT!

Each batchpur small wastewater treatment plant with the easy...con control can be monitored via WIFI or modem. Remote maintenance and updates are possible at any time. Maintenance work and test runs can also be carried out in the absence of the house residents as part of a maintenance contract. Appointments become exceptionally simple and can be scheduled during normal business hours. This is real service for the customer.

\*\* Cleaning classes according to german regulations.

HIGHER COMFORT | LOWER COSTS | CONSISTENTLY FAIR

OUR

# TANKS VARIANTS

THE RIGHT CONTAINER FOR EVERY NEED

## PLASTIC TANK

Batchpur offers a range of plastic tanks designed and selected with the utmost care.

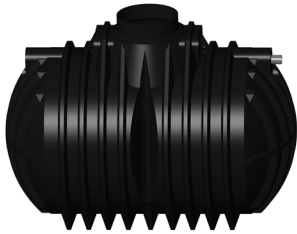
- with manufacturer and performance declarations depending on the application
- high quality material
- easy installation
- precisely dimensioned: available in many different sizes
- best craftsmanship: welded or rotated

## CONCRETE TANK

A high concrete quality in combination with modern manufacturing technology ensures a quality product that meets all requirements of wastewater treatment.

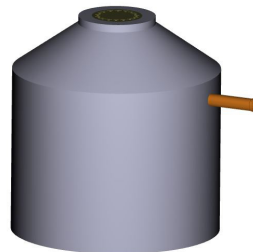
- with manufacturer and performance declarations depending on the application
- dimensionally stable
- buoyancy-proof
- quick and easy to install

Plastic tanks available for 4–30 PE batchpur systems



Exemplary design of a plastic tank

Concrete tank available for 4–50 PE batchpur-systems



Exemplary design of a concrete tank



## REHABILITATION/MODERNIZATION OF YOUR EXISTING PLANT

batchpur SBR small wastewater treatment plants are ingenious for the rehabilitation / modernization by simple retrofitting of your existing plant. No matter whether it is a round or square pit or container, whether a 2-chamber, 3-chamber or a pit with even more chambers, whether concrete or plastic: **batchpur can be retrofitted in all container types that meet the specifications, e.g. regarding water depth, stability, watertightness and volume.**



## WATER IS THE FUTURE

### BUT IT NEEDS SOLUTIONS IN THE PRESENT!

Competently planned and professionally built. In a trusted circle of developers, manufacturers and sales partners, we live our passion for water.

We develop high-quality purification technology with expandable cleaning stages - convincing in quality, durability and functionality - for you!

## CONTACT US



### **batchpur GmbH & Co KG**

Münchener Straße 8  
06796 Brehna, Germany

Tel.: +49 34954 639877  
Fax: +49 34954 639875

[sales@batchpur.com](mailto:sales@batchpur.com)  
[batchpur.com](http://batchpur.com)

SCAN ME



Photos for collages and illustrations: © Batchpur GmbH & Co KG;  
AdobeStock photos for collages and illustrations: AdobeStock ©  
OLIVER stockphoto; Firverr.com © zumanurr

© Status 05.2022. Subject to technical changes. Illustrations may vary depending on design.